



ANTEO 

**A GIANT BY
YOUR SIDE.**

A GIANT BY YOUR SIDE

ANTEO

A brand of
PROMETEON



Every day is a big day: long distances to cover, tight deadlines, unexpected and demanding situations on and off the road.

That's why it is good to have an experienced ally to face the daily challenges with confidence and serenity.

ANTEO's product range is the expression of innovation, research and deep industry knowledge. The reliable partner to achieve your goals with.

From now on, you have a giant by your side.



ANTEO

ANTEO

ON ROAD TRUCK



Pro-S

Designed for all season use on steer axles on long-distance and regional haul trucks. It offers great road holding, steering precision and grip in all conditions.



- Tread pattern designed to promote safety through wet and snow grip performance.
- The groove geometry design prevents stone trapping for maximum tearing resistance.
- Tread footprint optimized for optimum steering precision.

Pro-D

Designed for use on drive axles on long-distance and regional haul trucks in varying weather conditions. It offers a successful combination of traction and regular wear.



- Waved grooves, bumpers in the transversal grooves and tie-bar on the shoulders enhance traction and even wear.
- Functional sipes enhance wet and snow grip performance.
- Optimized tread block design promotes regular wear and tear resistance.

ON ROAD TRAILER



Pro-T

Designed for fitment on trailer axles, it ensures steady handling, lateral stability and great tearing resistance.



- Wide footprint area grants regular wear.
- Embedded bumpers enhance road holding in dry and wet conditions.
- Waved groove design optimizes stone ejection, ensures great resistance to lateral forces (stresses) and promotes trailer stability.

Pro-T II

Designed for fitment on trailer axles, it enhances superior handling, even wear throughout the whole tyre life, high mileage, and great tearing resistance.



- Embedded bumpers offer road holding in dry and wet conditions.
- Waved grooves design promotes even wear and ensures great resistance to lateral forces (stresses).
- Optimized tread pattern design enhances superior handling, mileage and trailer stability.



Size range

- 245/70 R 17.5
- 265/70 R 19.5
- 315/70 R 22.5
- 215/75 R 17.5
- 285/70 R 19.5
- 295/80 R 22.5
- 235/75 R 17.5
- 315/80 R 22.5

Size range

- 245/70 R 17.5
- 265/70 R 19.5
- 215/75 R 17.5
- 235/75 R 17.5

Size range

- 385/55 R 22.5
- 385/65 R 22.5

ON ROAD COACH



URBAN



Pro-S

Designed for all-season use on all axles on long-distance and regional haul coach applications. It grants great handling, steering precision and long tread life, as well as high comfort for driver and passengers.



- Tread pattern designed for safety enhancing wet and snow grip performance.
- Tread footprint optimized for optimum steering precision.
- Mould design geometry enhances acoustic comfort.

Pro-D

Designed for use on drive axles on long-distance and regional haul coach applications in demanding weather conditions. It offers an effective combination of comfort, grip and traction performance and regular wear.



- Waved grooves, bumpers in the transversal grooves and tie-bar on the shoulders enhance traction and even wear.
- Functional sipes enhance wet and snow grip performance.
- Optimized tread block pitch sequence promotes acoustic comfort and regular wear.

Pro-M

Designed for fitment of all axles of city buses, it offers high efficiency and safety standards, and maximizes traction and grip even on wet and slippery surfaces.



- The innovative tread pattern design ensures handling, traction and grip on wet and slippery surfaces, and reduces braking distance.
- The new continuous profile of the sidewall provides high resistance to friction. Stone ejectors on lateral grooves prevent casing damages and enhance retreadability.
- Embedded bumpers protect the groove bottom enhancing regular wear, acoustic comfort and low rolling resistance.



Size range

- 295/80 R 22.5
- 315/80 R 22.5*

Size range

- 275/70 R 22.5

* Only Pro-S tread pattern.

ON-OFF ROAD



ON-OFF ROAD



Mover-S

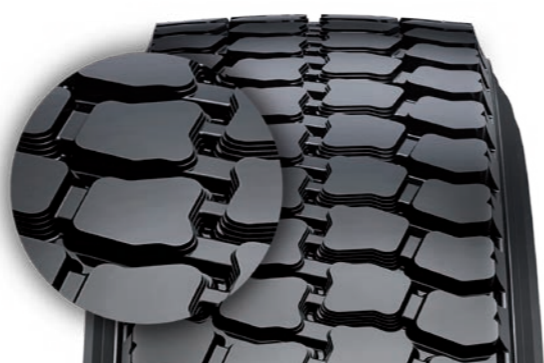
Designed for use on steer axles, it ensures resistance against tearing and lacerations, and offers grip in changing and severe driving conditions.



- Innovative groove design grants the tread pattern «self-cleaning» and excellent tear and cut resistance.
- Lateral cavities for optimum ventilation in the buttress area and limited heat generation for superior tyre life.
- Functional sipes enhance grip and wet braking distance.

Mover-D

Designed for use on drive axles, it meets the requirements on asphalted road driving as well as on rough, tough surface conditions. It safeguards robustness and tyre integrity.



- Innovative tread pattern design maximizes traction in both on-road and off-road conditions.
- Optimized groove geometry grants an excellent tear resistance and low noise generation.
- Adaptable Tread Pattern Technology: the variable tread geometry during tyre life guarantees robustness and extended tyre life.

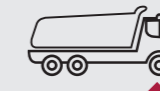


Mover-M

Designed for fitment of all axles, it offers long tread-life and high resistance both on-road and off-road in rough, tough conditions sets.



- The groove design guarantees cut resistance, easy cleaning and low noise generation for a comfortable ride.
- Special side lugs design for optimum ventilation in the buttress area and limited heat generation for long tyre life.
- Innovative tread pattern design with sipes on the ribs enhances grip and wet braking distance.



Size range

■ 315/80 R 22.5 ■ 13 R 22.5

Size range

■ 385/65 R 22.5

TECHNICAL DATA

REGROOVING

P. MAX = 2mm — W.MAX = 8mm

ON ROAD

| TREAD PATTERN | SIZE | LOAD INDEX / SPEED CODE | SECTION WIDTH (mm) | DIAMETER (mm) | STATICAL RADIUS (mm) | ROLLING CIRC. (mm) | RIMS | MARKING | REGULATION EU 2020/740 - Label parameters | | | | |
|---------------|---------------|-------------------------|--------------------|---------------|----------------------|--------------------|-----------------------|---------|---|-----|-----|-------|---|
| | | | | | | | | | (1) | (2) | (3) | dB | ▲ |
| PRO-S | 215/75 R 17.5 | 126/124 M | 216 | 768 | 360 | 2342 | <u>6.00-6.75</u> | M+S | D | A | A | 69 dB | ✓ |
| PRO-D | 215/75 R 17.5 | 126/124 M | 216 | 775 | 363 | 2364 | <u>6.00-6.75</u> | M+S | D | B | A | 69 dB | ✓ |
| PRO-T | 215/75 R 17.5 | 135/133 J | 216 | 773 | 354 | 2358 | <u>6.00-6.75</u> | M+S/FRT | C | B | B | 69 dB | ✓ |
| PRO-S | 235/75 R 17.5 | 132/130 M | 236 | 802 | 374 | 2446 | <u>6.75-7.50</u> | M+S | D | A | A | 69 dB | ✓ |
| PRO-D | 235/75 R 17.5 | 132/130 M | 236 | 804 | 375 | 2452 | <u>6.75-7.50</u> | M+S | E | A | A | 73 dB | ✓ |
| PRO-T | 235/75 R 17.5 | 143/141 J (144/144 F) | 240 | 795 | 362 | 2425 | <u>6.75-7.50</u> | M+S/FRT | D | A | A | 70 dB | ✓ |
| PRO-S | 245/70 R 17.5 | 136/134 M | 244 | 804 | 371 | 2452 | <u>6.75-7.50</u> | M+S | D | A | A | 69 dB | ✓ |
| PRO-D | 245/70 R 17.5 | 136/134 M | 244 | 808 | 372 | 2464 | <u>6.75-7.50</u> | M+S | E | B | A | 73 dB | ✓ |
| PRO-T | 245/70 R 17.5 | 143/141 J (146/146 F) | 252 | 796 | 363 | 2428 | <u>6.75-7.50</u> | M+S/FRT | D | A | A | 69 dB | ✓ |
| PRO-S | 265/70 R 19.5 | 140/138 M | 267 | 861 | 398 | 2626 | <u>6.75-7.50-8.25</u> | M+S | C | B | A | 69 dB | ✓ |
| PRO-D | 265/70 R 19.5 | 140/138 M | 267 | 865 | 400 | 2637 | <u>6.75-7.50-8.25</u> | M+S | D | B | B | 74 dB | ✓ |
| PRO-T | 265/70 R 19.5 | 143/141 J | 267 | 861 | 398 | 2626 | <u>7.50-8.25</u> | M+S/FRT | D | A | A | 69 dB | ✓ |
| PRO-S | 285/70 R 19.5 | 146/144 L | 290 | 887 | 409 | 2707 | <u>7.50-8.25-9.00</u> | M+S | C | B | A | 70 dB | ✓ |
| PRO-D | 285/70 R 19.5 | 146/144 L | 290 | 892 | 411 | 2721 | <u>7.50-8.25-9.00</u> | M+S | D | B | B | 74 dB | ✓ |
| PRO-S | 295/80 R 22.5 | 154/149 M | 306 | 1050 | 489 | 3203 | <u>8.25-9.00</u> | M+S | C | B | A | 71 dB | ✓ |
| PRO-D | 295/80 R 22.5 | 152/148 M | 306 | 1056 | 491 | 3219 | <u>8.25-9.00</u> | M+S | D | B | B | 74 dB | ✓ |
| PRO-S | 315/70 R 22.5 | 156/150 L (154/150 M) | 315 | 1003 | 464 | 3059 | <u>9.00-9.75</u> | M+S | C | A | A | 68 dB | ✓ |
| PRO-D | 315/70 R 22.5 | 154/150 L (152/148 M) | 315 | 1012 | 468 | 3087 | <u>9.00-9.75</u> | M+S | D | A | B | 74 dB | ✓ |
| PRO-S | 315/80 R 22.5 | 156/150 L (154/150 M) | 316 | 1070 | 498 | 3264 | <u>9.00-9.75</u> | M+S | C | B | A | 71 dB | ✓ |
| PRO-D | 315/80 R 22.5 | 156/150 L (154/150 M) | 316 | 1078 | 501 | 3288 | <u>9.00-9.75</u> | M+S | D | B | B | 72 dB | ✓ |
| PRO-T II | 385/65 R 22.5 | 160 K | 379 | 995 | 455 | 3035 | <u>11.75-12.25</u> | M+S/FRT | C | A | A | 69 dB | ✓ |
| PRO-T II | 385/65 R 22.5 | 160 K (158 L) | 381 | 1068 | 485 | 3237 | <u>11.75-12.25</u> | M+S/FRT | C | A | A | 71 dB | ✓ |
| PRO-S Coach | 295/80 R 22.5 | 154/149 M | 306 | 1050 | 489 | 3203 | <u>8.25-9.00</u> | M+S | C | B | A | 71 dB | ✓ |
| PRO-D Coach | 295/80 R 22.5 | 152/148 M | 306 | 1056 | 491 | 3219 | <u>8.25-9.00</u> | M+S | D | B | B | 74 dB | ✓ |
| PRO-S Coach | 315/80 R 22.5 | 156/150 L (154/150 M) | 316 | 1070 | 498 | 3264 | <u>9.00-9.75</u> | M+S | C | B | A | 71 dB | ✓ |

URBAN

| | | | | | | | | | | | | | |
|-------|---------------|-----------------------|-----|-----|-----|------|------------------|-----|---|---|---|-------|---|
| PRO-M | 275/70 R 22.5 | 150/148 J (152/148 E) | 285 | 965 | 453 | 2943 | <u>7.50-8.25</u> | M+S | C | B | A | 71 dB | ✓ |
|-------|---------------|-----------------------|-----|-----|-----|------|------------------|-----|---|---|---|-------|---|

ON-OFF ROAD

| | | | | | | | | | | | | | |
|---------|---------------|-----------------------|-----|------|-----|------|--------------------|-----|---|---|---|-------|---|
| MOVER-S | 13 R 22.5 | 156/150 K (154/150 L) | 316 | 1117 | 518 | 3407 | <u>9.00-9.75</u> | M+S | D | A | A | 71 dB | ✓ |
| MOVER-D | 13 R 22.5 | 156/150 K (154/150 L) | 316 | 1121 | 519 | 3419 | <u>9.00-9.75</u> | M+S | D | A | B | 74 dB | ✓ |
| MOVER-S | 315/80 R 22.5 | 156/150 K | 316 | 1076 | 500 | 3282 | <u>9.00-9.75</u> | M+S | C | A | B | 72 dB | ✓ |
| MOVER-D | 315/80 R 22.5 | 156/150 K | 316 | 1080 | 502 | 3294 | <u>9.00-9.75</u> | M+S | D | A | B | 74 dB | ✓ |
| MOVER-M | 385/65 R 22.5 | 160 K (158 L) | 381 | 1068 | 485 | 3257 | <u>11.75-12.25</u> | M+S | C | A | A | 71 dB | ✓ |

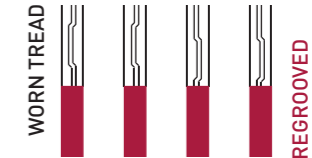
(1) Fuel efficiency class (2) Wet grip class (3) External rolling noise class  Snow grip / 3PMSF marking Rim underlined is measuring rim

ANTEO

ON ROAD



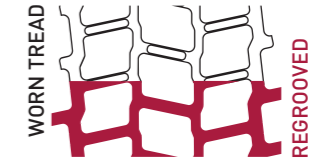
Pro-S



REGROOVED



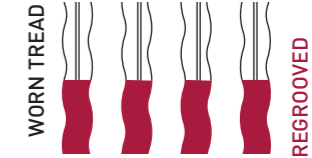
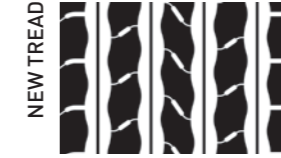
Pro-D



REGROOVED



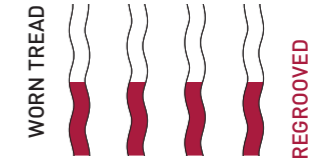
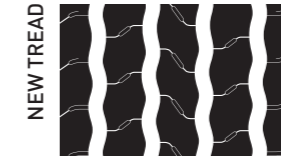
Pro-T



REGROOVED



Pro-T II

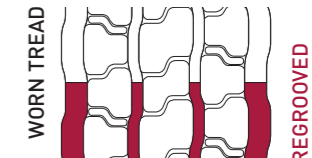
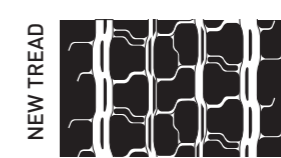


REGROOVED

URBAN



Pro-M



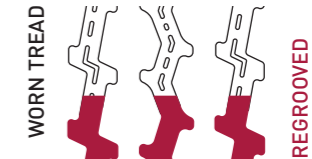
REGROOVED

P. MAX = 2mm — W.MAX = 8mm

ON-OFF ROAD



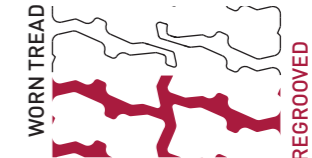
Mover-S



REGROOVED



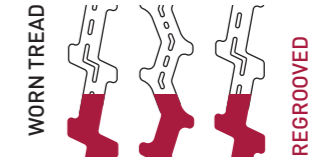
Mover-D



REGROOVED



Mover-M



REGROOVED

W.MAX: Maximum regrooving width - P.MAX: Maximum regrooving depth.

ANTEO

May 2021 edition. Prometeon Tyre Group S.r.l. reserves the right to modify the contents of this publication without prior notice. Copyright (c) 2021 Prometeon Tyre Group S.r.l. Anteo is a trademark of Prometeon Tyre Group S.r.l.



A brand of

PPROMETEON

Discover more on anteotyres.com

Dealer stamp